



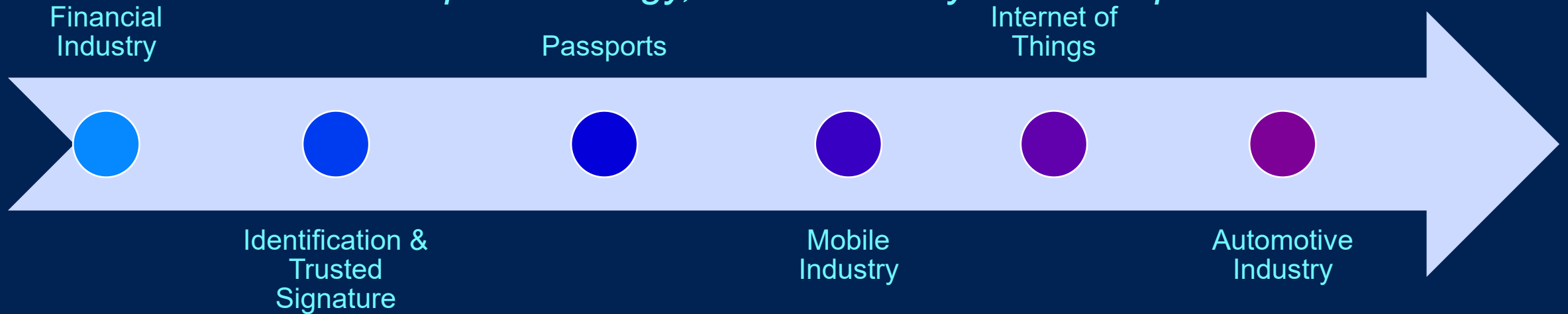
GlobalPlatform Overview

22nd May 2025

Richard Hayton,
GlobalPlatform Board Member, Chair of TES Committee and Automotive Task Force
Francesca Forestieri,
GlobalPlatform Automotive Lead

GlobalPlatform

*THE standard for managing applications on
secure chip technology, with over 25 years of experience*

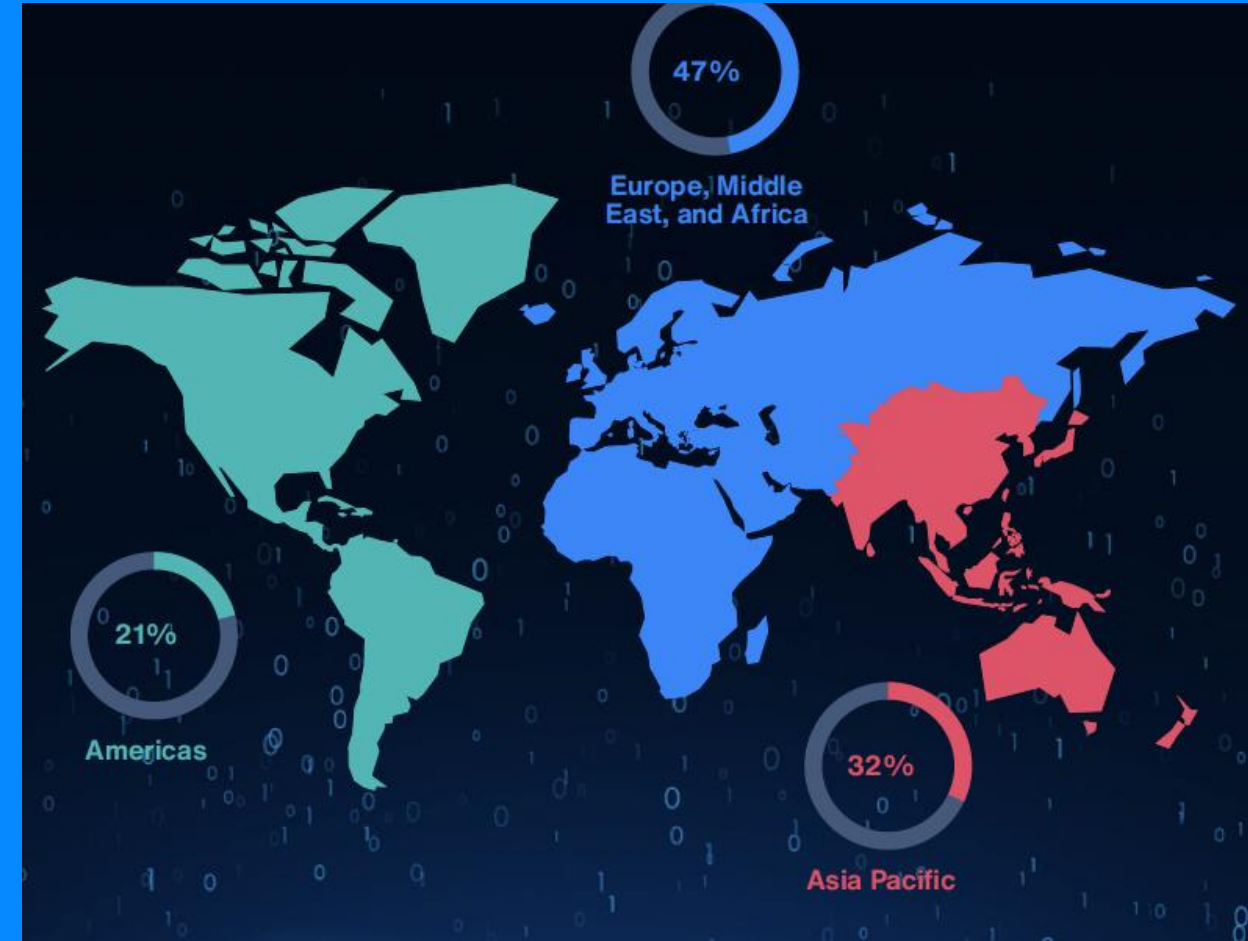
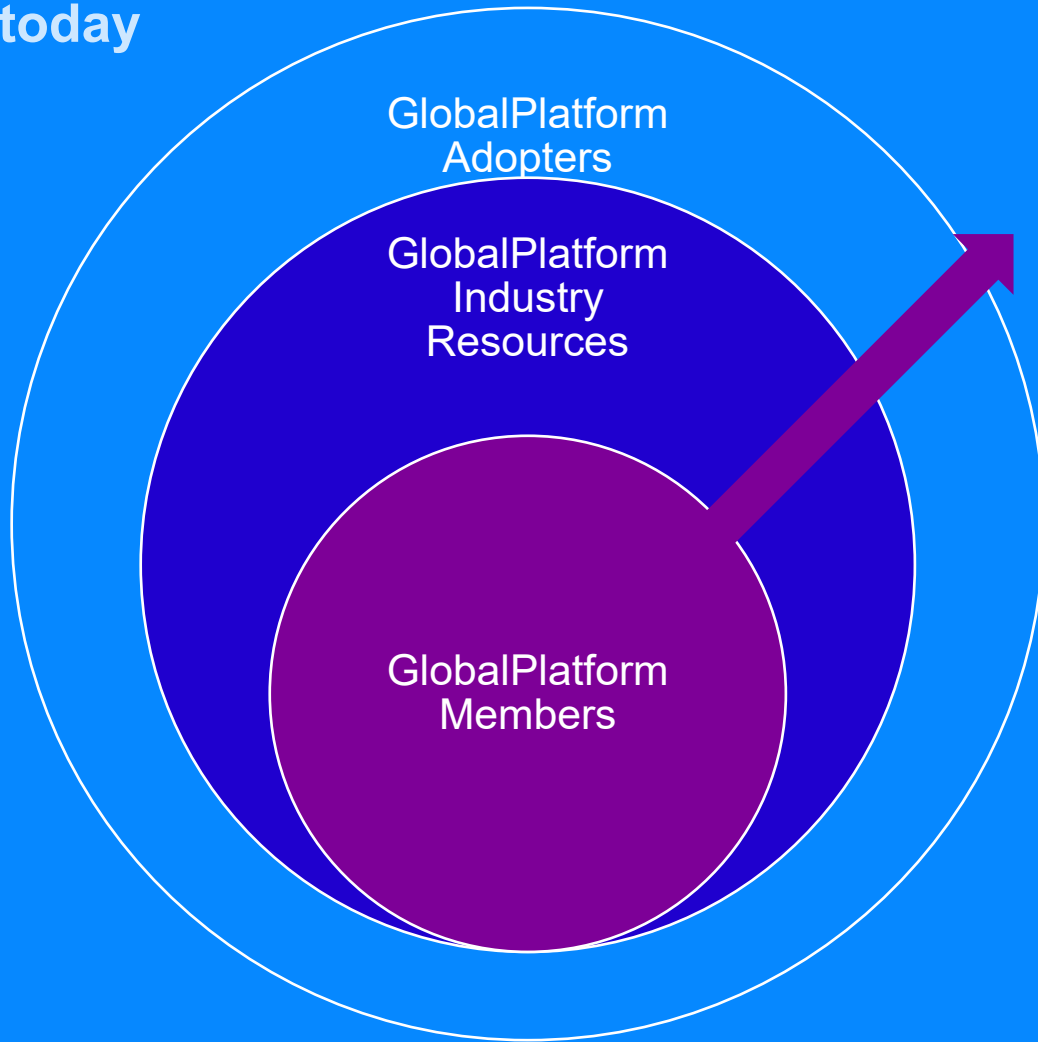


Mass Market deployment of industries has required: agreed functionality for transactions and transparent robust security to create trust among competitors and in the overall ecosystem



GlobalPlatform's Market Adoption

- 70 billion+ Secure Elements shipped worldwide are based on GlobalPlatform specifications
- Over 10's of billions GlobalPlatform-compliant Trusted Execution Environment in the market today



Our Members

Full



Participant



Observer



Watchdata W.UNITED

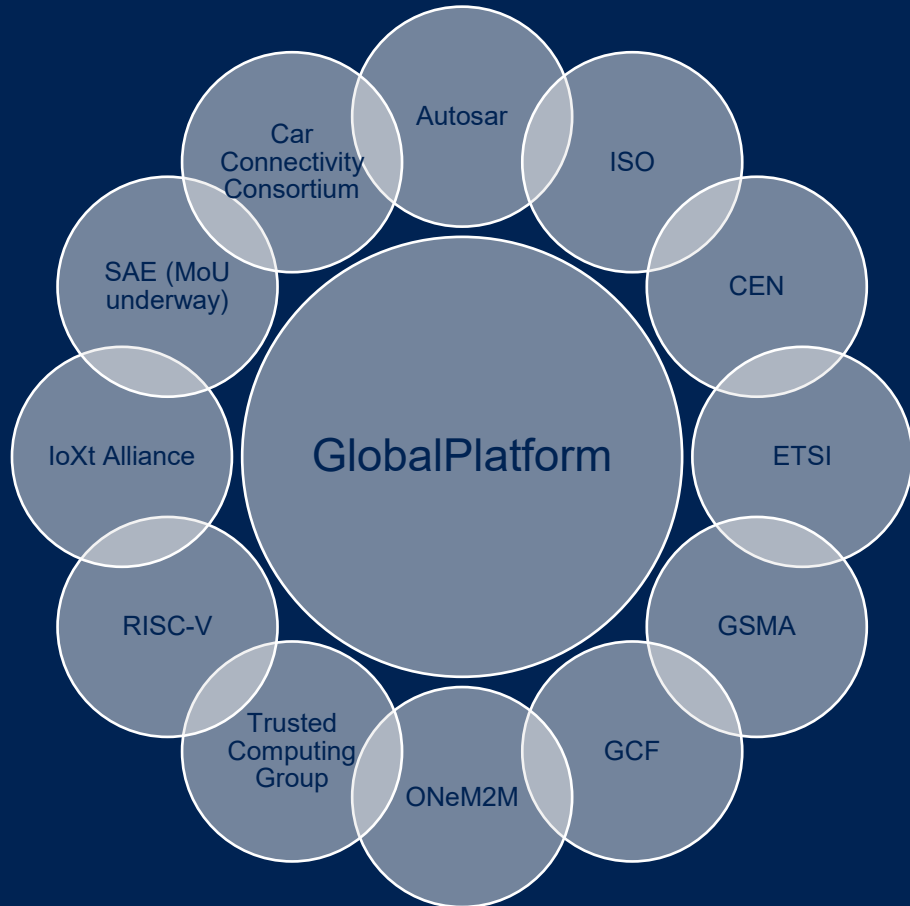
Public Entity



Consultants



Your Partner for Security Standards



Collaboration is KEY

Our strong collaborative relationships across the world, from international standards organizations to regional industry bodies, are key to realizing our vision of:

- Fully open ecosystems that focus on **interoperability**
- Efficiently delivers **innovative digital services**
- Across vertical markets
- Supporting different levels of security, while
- Providing privacy, simplicity, and convenience for the user.

GlobalPlatform has 34 Industry partners from around the world, integrating our specifications and services in their work.

GlobalPlatform Brings Lessons to Automotive: How to Create the Security Foundation for a Healthy, Innovative Ecosystem Services



GlobalPlatform standards create a fertile environment for mass market growth and innovation of services and hardware



Services are key dynamic of industry BUT hardware remains a critical base for trust



High Evolution in Markets over time, with issuance of new services on very short timelines (3-6 months).



With standardised portability and updatability, device product life is extended since it can adapt to requirements of new services.



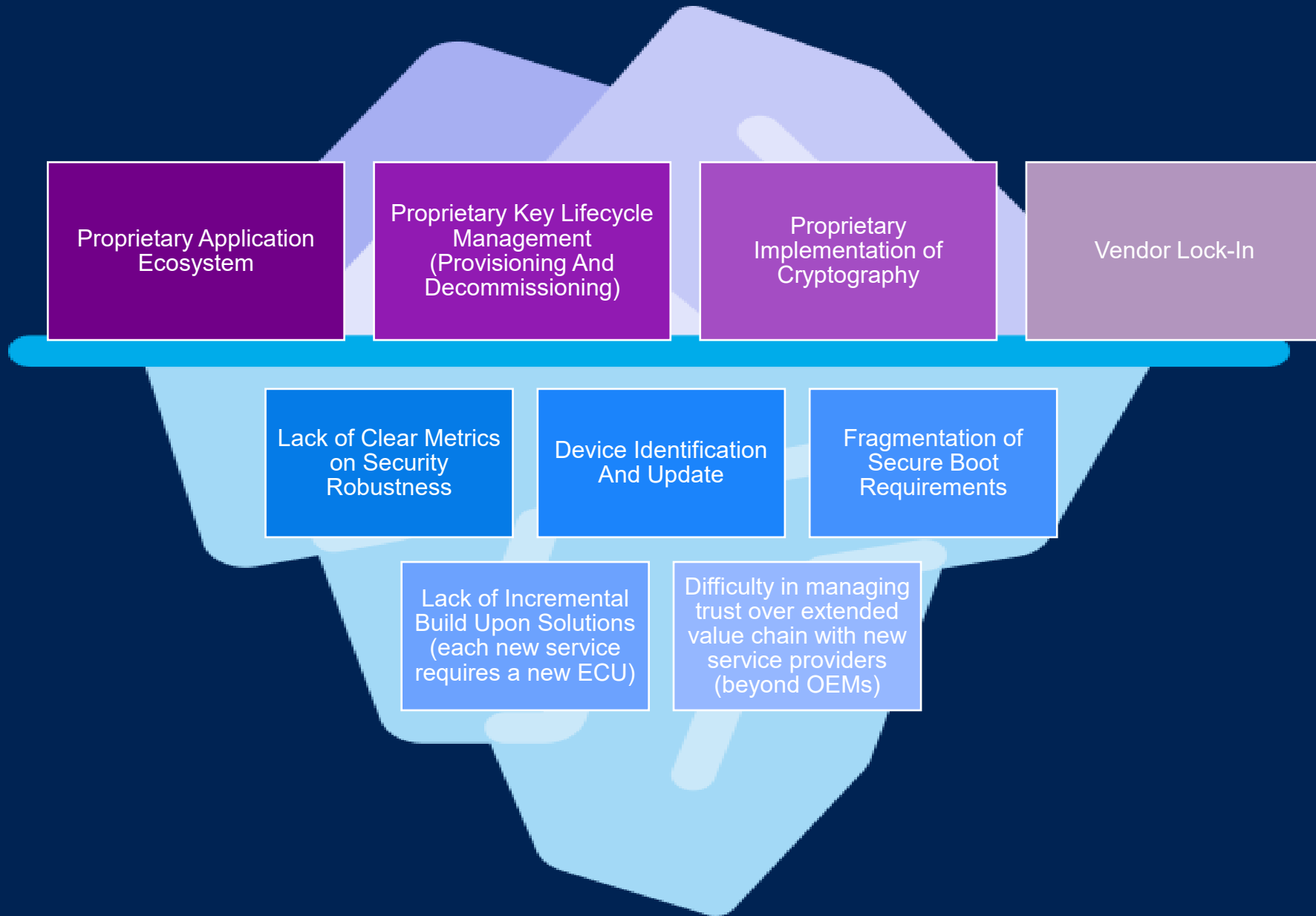
Synergistic opportunities (also across “Frenemies”) for the development of new services (not everything has to be developed from scratch by a provider)

Based upon GlobalPlatform’s Experience in Over 25 Years with Smart Cards, Mobile, IoT

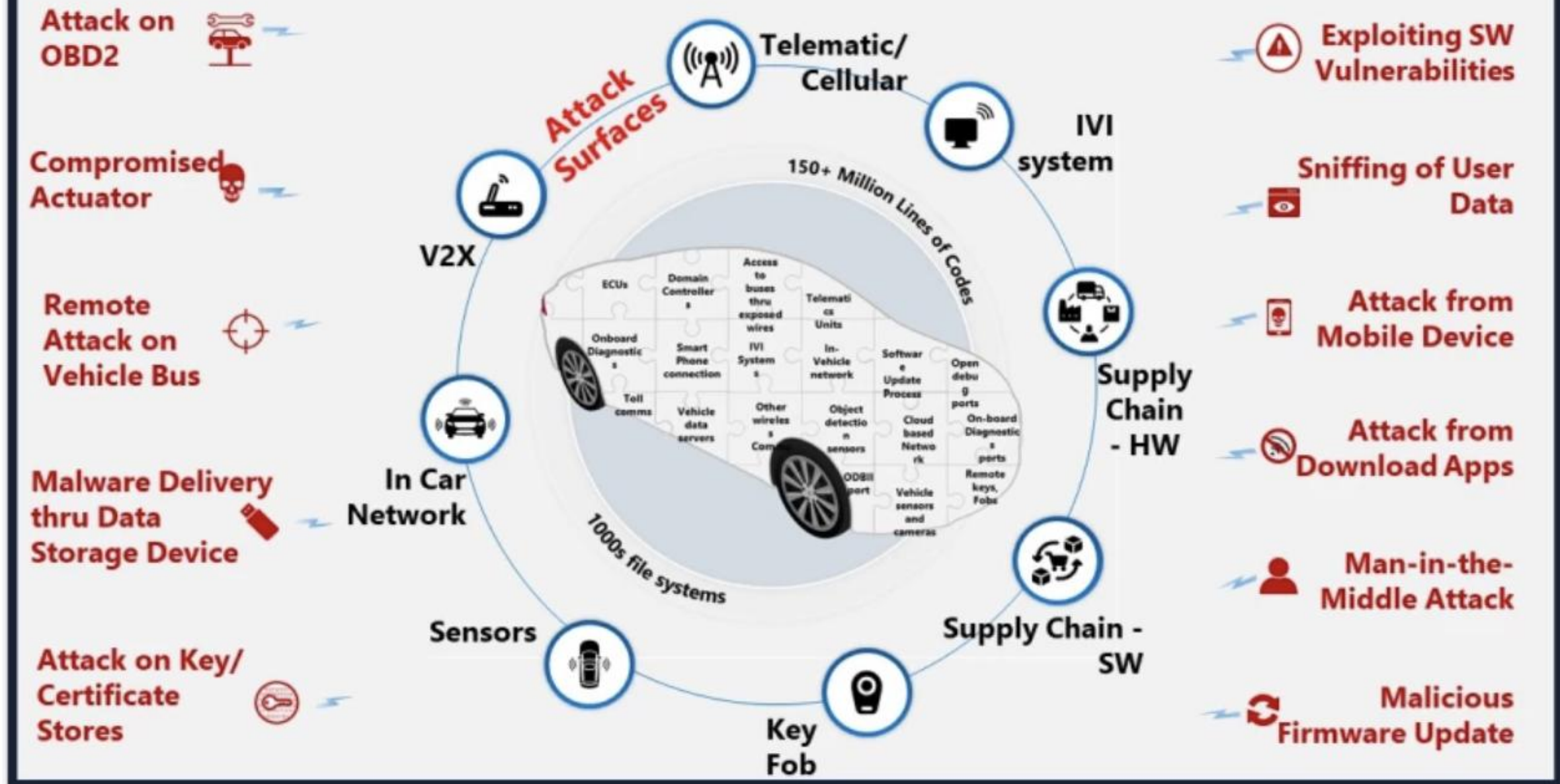


What GlobalPlatform in Automotive?

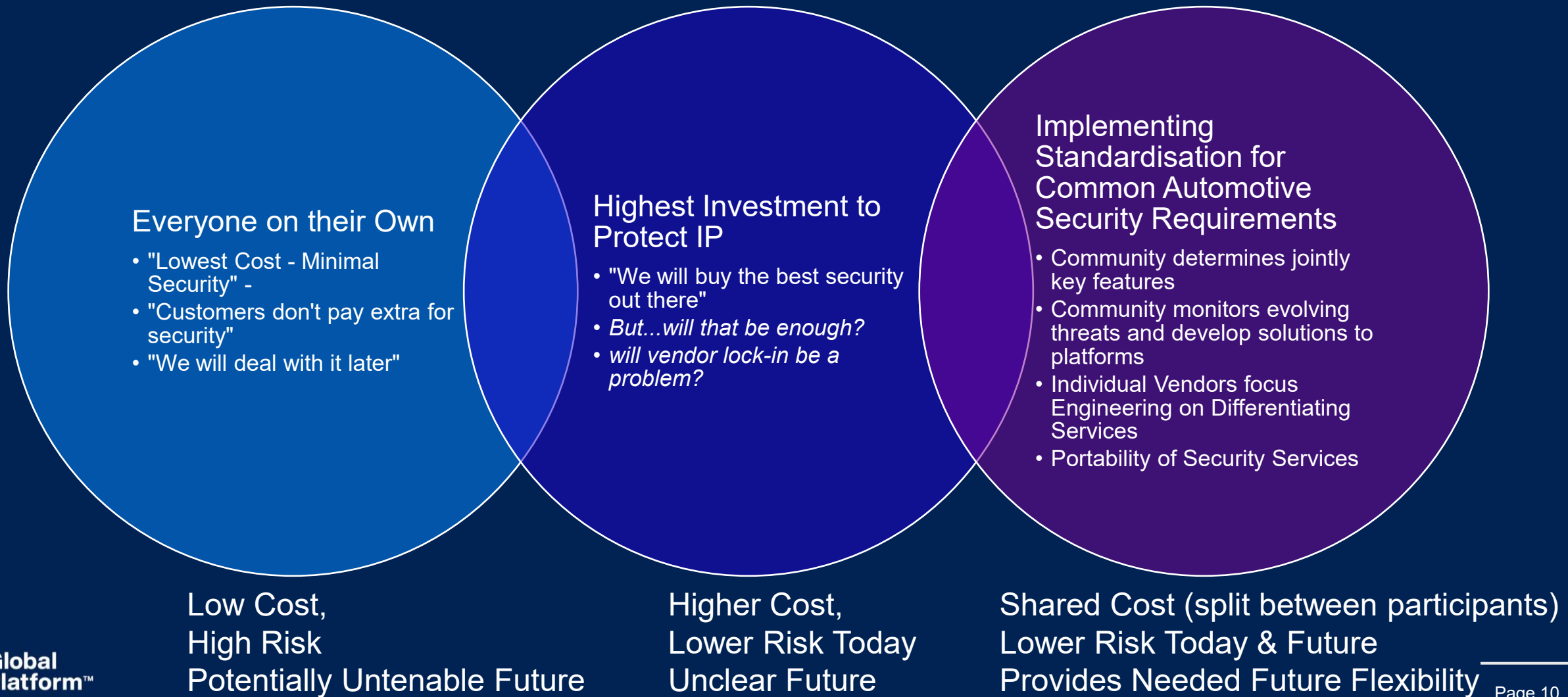
Challenges of Automotive Security Market Today



Largest Threat Surface In The World



Different Security Paths by Automotive OEMs



No one wants to pay for “Security” BUT

OEMs have Increased Skin in the game to warrant Cybersecurity Spend

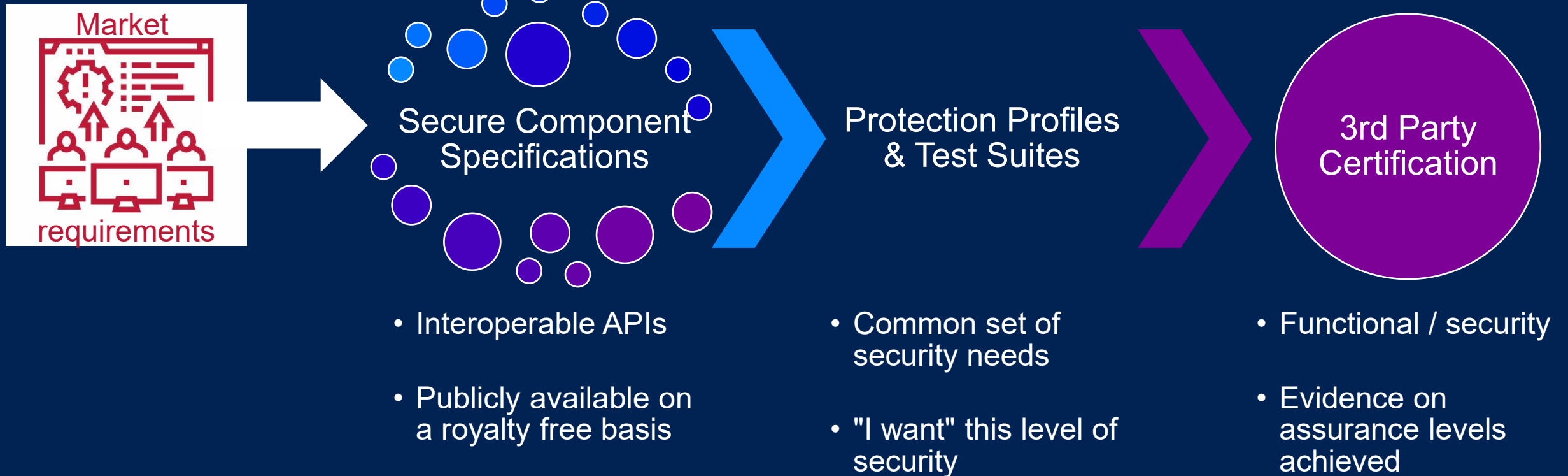
Regulatory Compliance & Reducing Liability

- Compliance with Cybersecurity Management Processes for type approval (UNECE 155 64 countries)
- Evidence of implementation of best practices

Protecting Investments

- Protecting High Value of Software Assets of Vehicle
- Protecting Against Unpaid Feature Enablement
- Reduction of Warranty Fraud

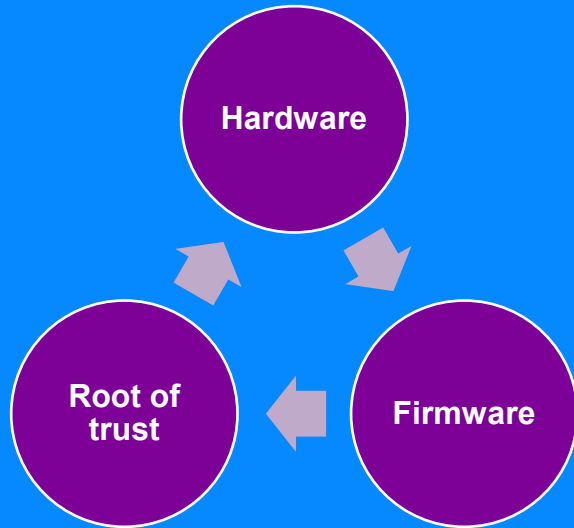
International Digital Security Transformation: GlobalPlatform's Recipe for Success



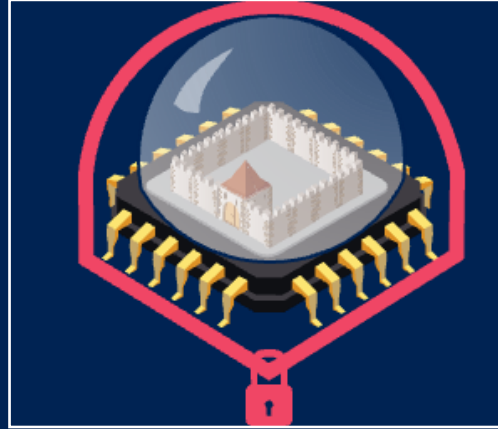


GlobalPlatform Technology

GlobalPlatform Foundation Technologies



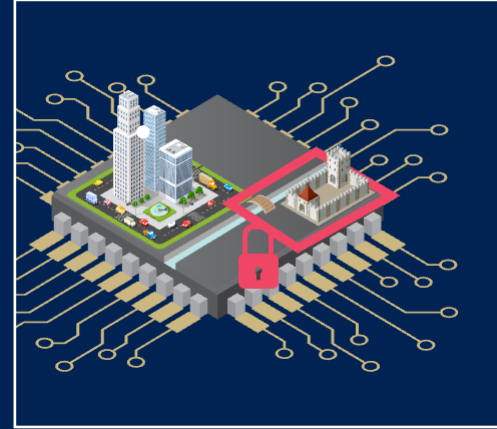
Secure Element



A secure enclave protected against physical and software attack

- In OVER 192 Million Connected Cars in 2023

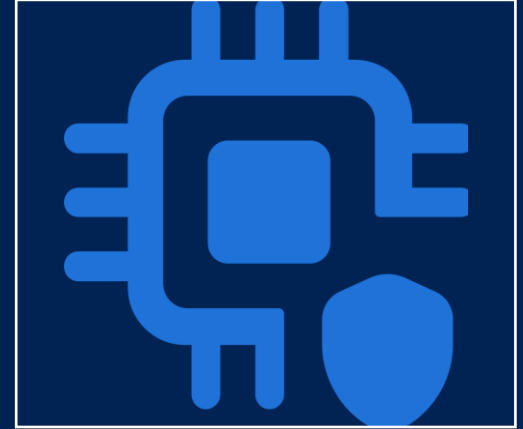
Trusted Execution Environment



A secure operating system running on a standard CPU alongside regular OS/Applications

- In Over 100 Million Vehicles as of 2023

Isolation Technologies



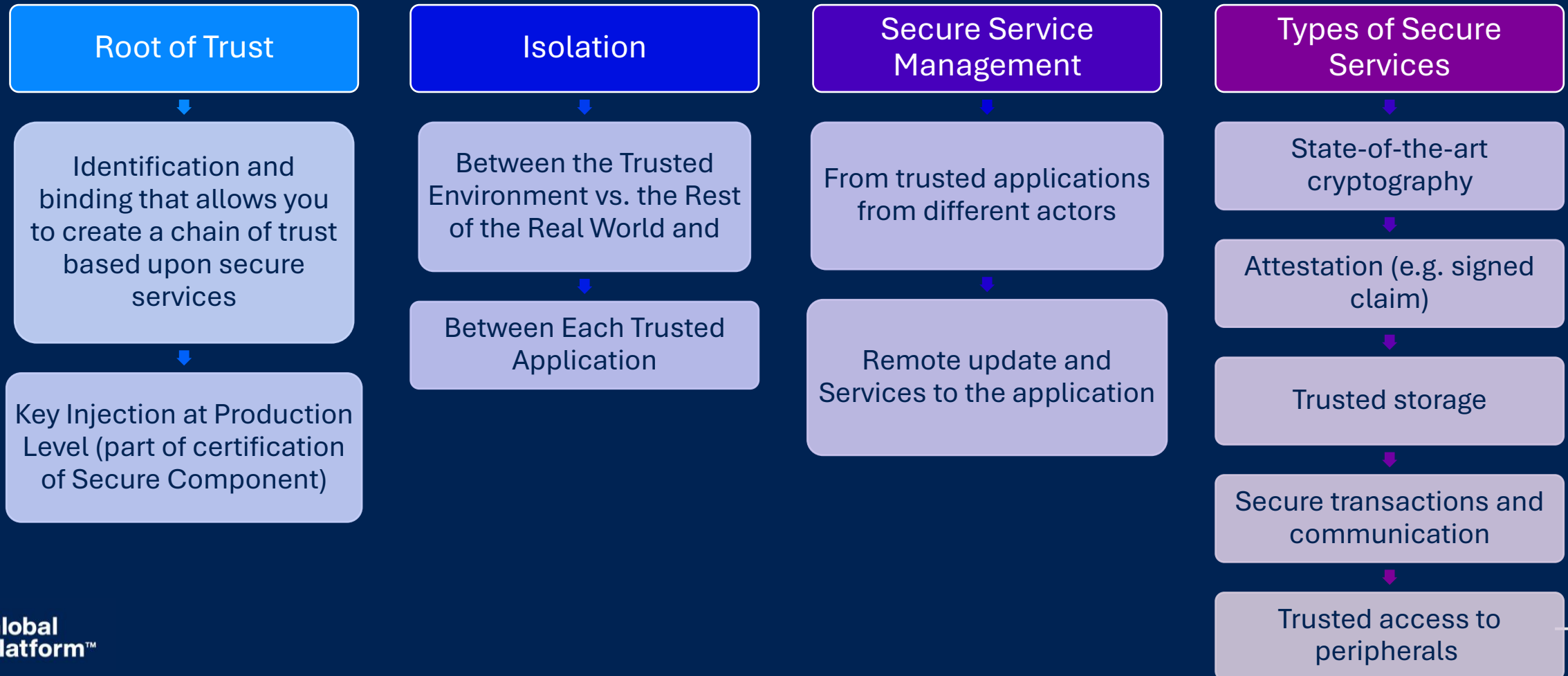
Higher level services and broad capabilities to support specific use cases

For example, APIs and capabilities of keystores that might be implemented in SEs, TEEs or other technologies.

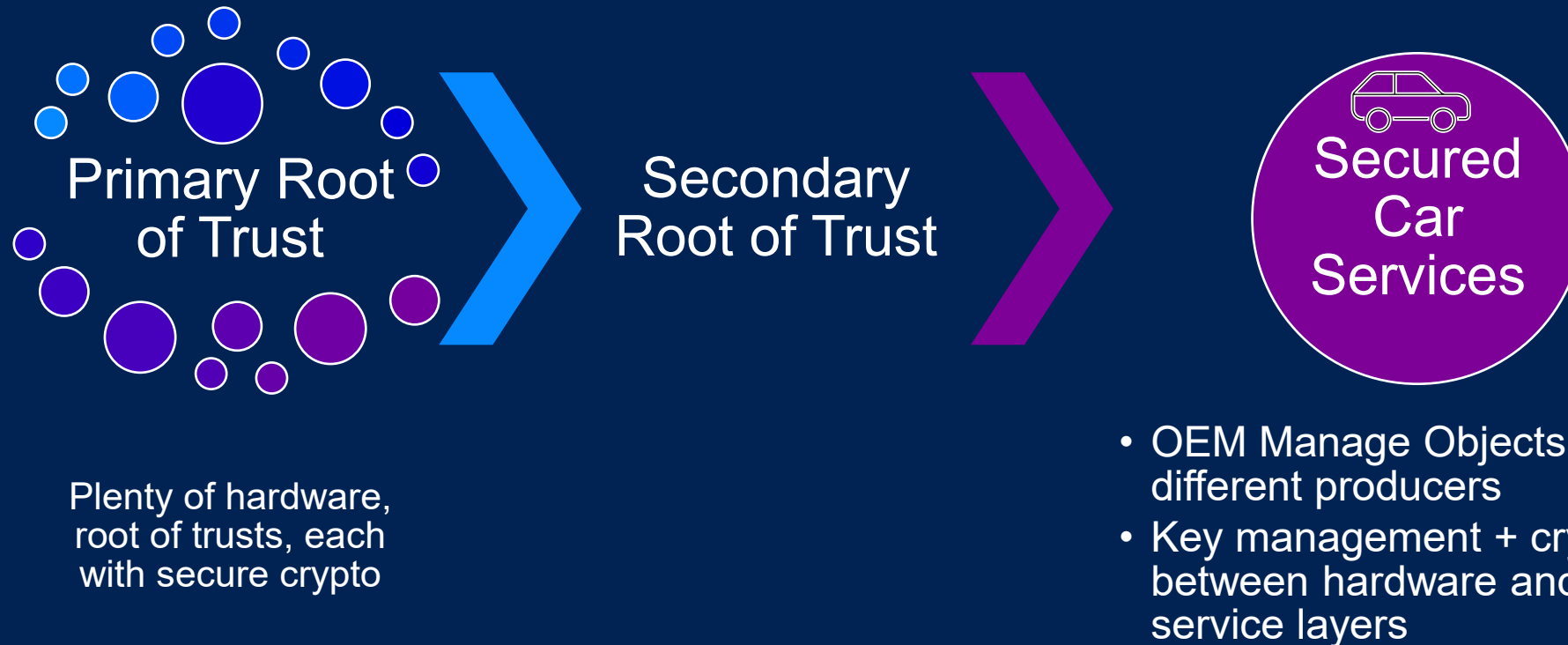
- Runs a full operating system providing standardized APIs and functions
- 3rd party Security Certification
- Full support for App and OS update over-the-air

Secure Components

offer a standardised controlled and protected execution environment with the following characteristics:

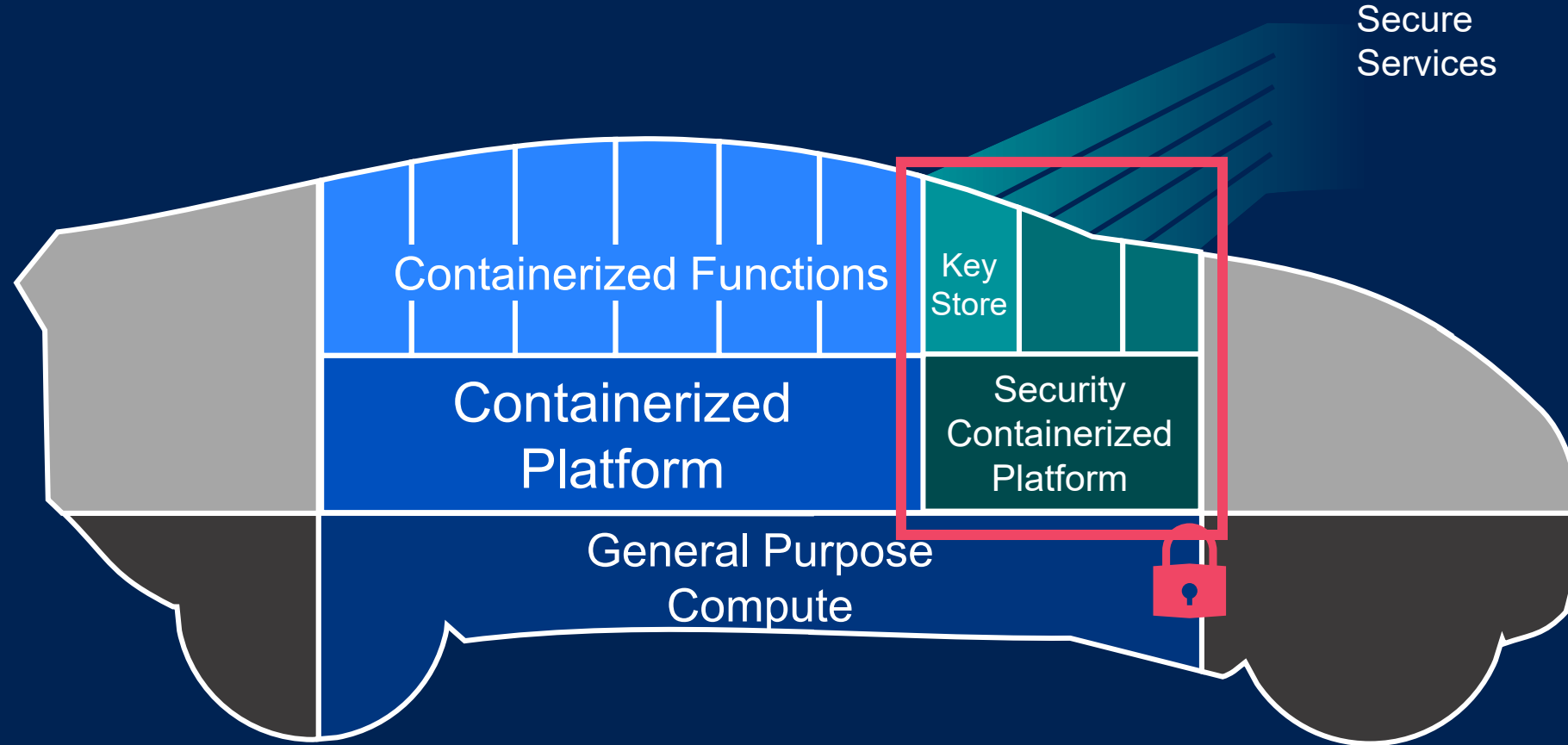


Roots of Trust for Secure Software: Providing OEMs Standardised Management Capabilities



GlobalPlatform provides a bridge between hardware and software security – as well as supporting across multi-tenant service providers. Standardisation of the common security requirements, augments hardware and software with interoperable functionality and transparent security robustness levels.

GlobalPlatform & In-Vehicle Multi-Tenant Services



GlobalPlatform Approach

2. Trusted Applications/Applets developed/ deployed by the ecosystem, to meet the specific requirements of a particular ECU or a customer solution using standardized APIs

Example Standardized Primary Key Injection

SIM	Sec Boot	ECU ID
Key Negotiation	ADAS	FOTA/ SOTA
Sec Logging	Auth Cmd	Payment
Firewall	SecOC	MACsec

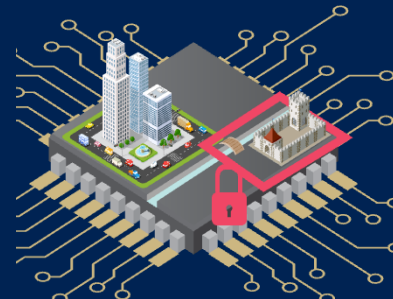


1. Platform: Standardized APIs & Management command, update, state-of-the-art crypto, crypto agility ...

Secure Component Platform:
Functionally and Security Certified

Hardware

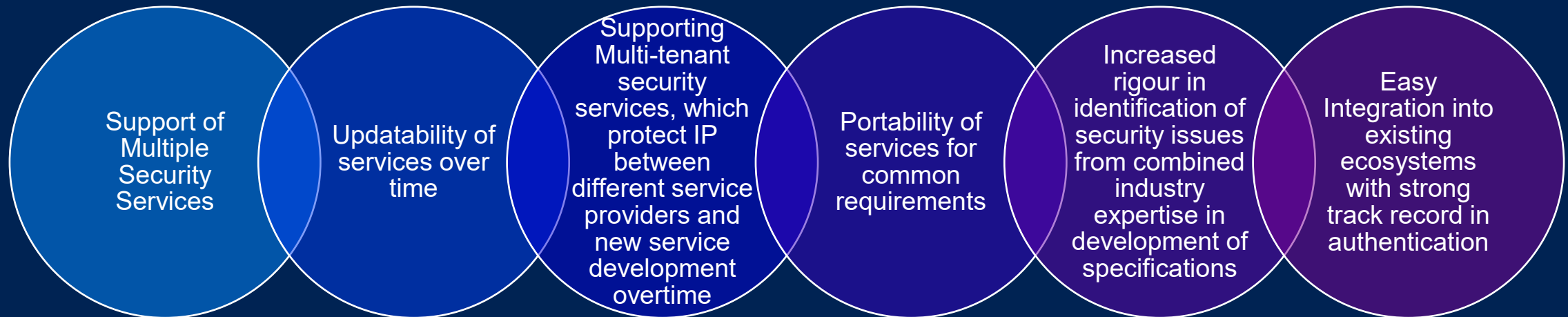
Secure Element



Trusted Execution Environment

GlobalPlatform Provides Future Proofing of Security Services & Adds Flexibility

Unlike traditional automotive HSMs/SHEs, GlobalPlatform offers standard requirements, common APIs, testing suites, and certification of compliance with specifications on security robustness and interoperability



Possibility of reuse, incremental developments across ECU evolution (without having to start over from scratch each time for every new ECU project)



Trends of Automotive Threats/Attacks

22nd May 2025

Dennis Kengo OKA, IAV Co. Ltd.