

THALES

Building a future we can all trust



Future proofing Digital Identity in Europe with security & trust

Benoît Jouffrey, CTO, Thales Digital Identity & Security





EU Digital ID (EUDI) wallets:

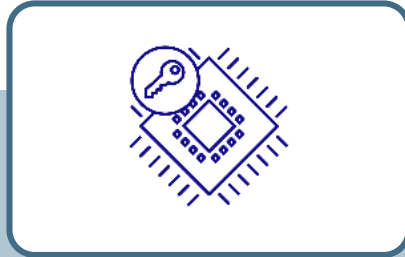
- Above 66% in favor. Digital usage is compelling.
- User demand for trusted players (governments first) to provide the wallets

Two key priorities:



Trust: to secure citizens digital identity

**EUDI Wallet is a challenging key project for the EU.
Security will drive its success.**



Today's physical IDs meet the highest level of security.

They are based on GlobalPlatform secure elements.

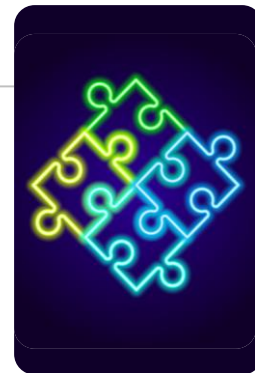
Smartphones already integrate the same secure hardware as physical IDs.

Let's take advantage of this to secure the EUDI Wallet.

New standards will soon enable the use of eSE or eSIM to achieve this goal.



Interoperability: to address a large variety of use cases



Balancing Trust and Convenience

- While some use cases cannot do without the utmost level of security, but some others can, for example to provide a better convenience

High variety of requirements

- Variety of use cases: Civil registry, banking & payment, tax returns, driving license, diplomas, healthcare...
- Universal Coverage: a wallet for everyone
- Wallet management and life-cycle
- Local member state requirements

Relying on well-proven and well defined solutions for interoperability will solve many challenges

Clarity: to ensure consistence across all regulations



Complex and fragmented regulatory landscape

- DMA, CSA, CRA, eIDAS 2, NIS 2, AI Act

Authorities expected to achieve consistence between regulations

Regulations deployment: ramp-up phase required

- Allow progressive returns of experience
- Ensure implementation compliance with the different regulations

**Best way to prove compliance with all commitments:
A clear certification scheme.**

Certification: to ensure security for all stakeholders



A security certification scheme is required

- Complex applications such as EUDI wallets will surely be certified with a lighter scheme than Common Criteria

Secure elements are a strong base for this composite certification

- Secure elements already bring the highest level of trust to several ecosystems through different form factors
- EUDI wallets will be impacted by different certification schemes and GlobalPlatform certification ecosystem can help on easing the overall process

Ambitions: go beyond the initial use cases

Future challenges to support

- Digital ID for IoT
e.g. *connected cars*
- Digital ID for virtual worlds
e.g. *Metaverse*
- Digital ID for Cryptocurrency
e.g. *KYC*
or *AML (anti-money laundering regulations)*
- Ever improving adversarial context
e.g. *PQC*



5 key success factors of the EUDI Wallet roll-out



This document may not be reproduced, modified, adapted, published, translated, in any way, in whole or in part or disclosed to a third party without the prior written consent of THALES - © 2023 THALES. All rights reserved.

THALES

Building a future we can all trust



Thank you

www.thalesgroup.com

OPEN

